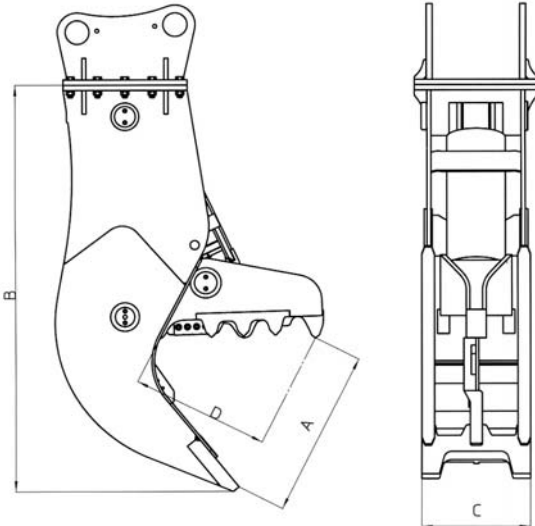


PULVERIZERS

MCP600 - MCP800 - MCP910 - MCP1000



Dimensions

	MCP600	MCP800	MCP910	MCP1000
	(mm)	(mm)	(mm)	(mm)
Jaw opening A	630	850	1000	1100
Height B	1600	2070	2400	2675
Width C	415	550	605	660
Jaw depth D	565	685	730	900



Technical bulletin

		MCP600	MCP800	MCP910	MCP1000
Excavator weight	(t)	10-18	18-25	25-35	35-45
Tool weight*	(kg)	1000	2050	2850	3800
Cylinder force	(t)	100	145	157	197
Force at upper tips (front teeth)	(t)	54	73	99	123
Force in the middle (middle of blade)	(t)	79	115	153	195
Cutting force	(t)	155	196	276	348
Hydraulic working pressure	(bar)	280-320	280-320	280-320	280-320
Oil flow	(l/min)	100-180	180-220	220-280	280-320
Rotation type	-----	NO ROT.	NO ROT.	NO ROT.	NO ROT.
Time of closing at max oil flow	(s.)	3,09	2,28	2,94	3,50
Time of opening at max oil flow	(s.)	1,88	2,26	2,74	3,36
N° of cycles per minute at max oil flow	(cycles/min)	12,1	13,2	10,6	8,7
Hyd. ports size cylinder	-----	1" SAE 6000 p.s.i.	1" SAE 6000 p.s.i.	1"1/4 SAE 6000 p.s.i.	1"1/4 SAE 6000 p.s.i.
Speed valve	-----	NO	SI	SI	SI
Max diameter to be cut**	(mm)	50	55	60	65
Blade length	(mm)	122	180	180	220
Interchangeable wear parts	-----	NO	SI	SI	SI

*the tool weight, here noted, includes also the STD coupler.

**the cutting tests have been realized with a test iron material.

The noted performances have been achieved by the maximum pression and capacity values.