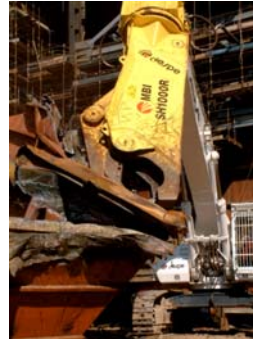
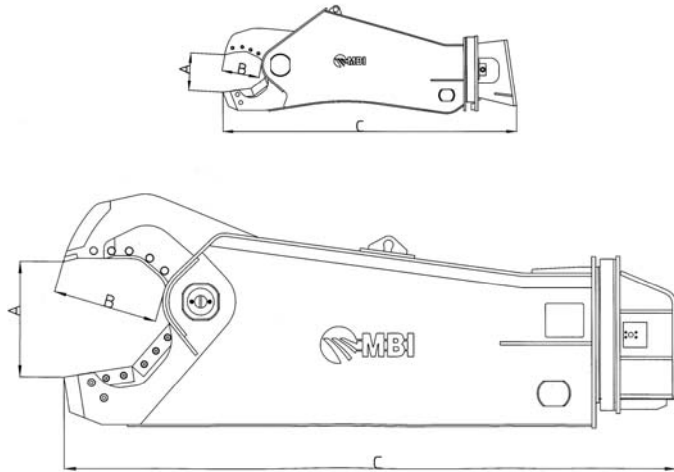


# SHEARS








SH25R - SH50R - SH180R - SH310R - SH410R - SH550R - SH700R - SH1000R



## Dimensions

	SH25R	SH50R	SH180R	SH310R	SH410R	SH550R	SH700R	SH1000R
	(mm)	(mm)	(mm)	(mm)	(mm)	(mm)	(mm)	(mm)
<b>Jaw opening A</b>	185	240	425	560	650	750	830	1050
<b>Jaw depth B</b>	160	240	465	565	650	650	750	850
<b>Length C</b>	1350	1900	2810	3400	3750	3950	4370	5200

## Cutting Table

	Rod	Tube	IPE	HEA	Plate	L profile	Rail
							
	(mm)	(mm)	(mm)	(mm)	(mm)	(mm)	(mm)
<b>SH25R</b>	40	114x4	120x55	n.d	6	100x10	n.d
<b>SH50R</b>	50	n.d	n.d	100	8	120x10	n.d
<b>SH180R</b>	55	n.d	270	120	12	120x12	n.d
<b>SH310R</b>	70	n.d	300	200	14	n.d	n.d
<b>SH410R</b>	90	n.d	450	320	20	200x24	n.d
<b>SH550R</b>	100	n.d	500	360	22	220x24	n.d
<b>SH700R</b>	120	n.d	600	400	25	240x24	n.d
<b>SH1000R</b>	150	n.d	900	600	35	n.d	n.d

The cutting tests have been realized with a test iron material.

