

Quick COUPLERS

SQ Fully Automatic Quick Couplers

The SQ fully automatic quick coupler system allows the safe and efficient selection of a wide variety of hydraulic attachments in seconds without the need for the operator to leave the cab. The SQ range are available for small to large excavators alike, all models have the same technology.

Steelwrist have patented the "Front Pin Lock" system, and it is the safest and most advanced fully automatic hydraulic quick coupler on the market. Front Pin Lock means that the attachment cannot fall off the coupler even if the rear wedge isn't connected properly.

Benefits of Steelwrist SQ System

- Up to 50% time saving on job sites
- Use the right tool for the right job
- Safest system on market
- Front Pin Lock + Visual Safety indication
- No damage to loose hydraulic hoses
- Reduce oil spills on site
- Compatible with OilQuick Systems

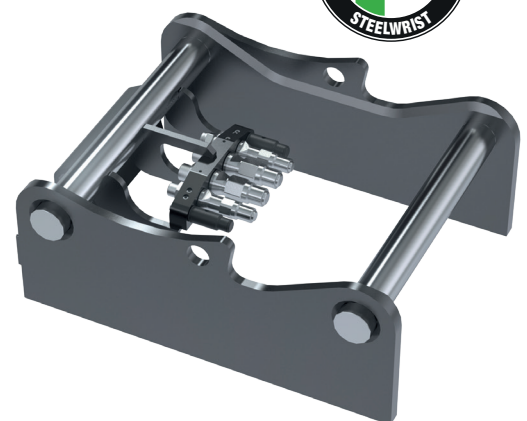
 **SQ Coupler Video**



SQ RANGE - ADAPTOR
PLATE WITH MANIFOLD



SQ RANGE - WELD ON ADAPTOR



Quick COUPLERS

SQ Fully Automatic Quick Couplers



The demand for productivity is consistently rising and in some applications the need for quick tool changes is a must-have requirement.

With Steelwrist SQ technology you will be able to change between attachments in seconds without ever leaving the cab. Not only are you reducing downtime you spend changing attachments you reduce the risk to your operators as they don't have to leave the cab.

Safe

By using the Front Pin Lock technology on our Couplers we manage to keep to the highest safety level with a mechanical fail-safe – not using electronic sensors.

Robust

By maintaining the proven steel casted body in the SQ couplers, we manage to keep the same exceptional strength/weight relationship as with other Steelwrist products.

The Steelwrist Qplus™ brand name represents all the improvements we have developed which distinguish us from competitor systems. Together they offer increased uptime and improved serviceability for the operator.

Qplus™ - Higher Flow!

With Steelwrist Qplus™ the flow can be up to 37% more compared to competitors products.

Qplus™ - More Uptime!

Steelwrist Qplus™ sealing technology is completely new and significantly more durable compare to competitor products giving you significantly more operational hours before seals have to be changed.

Qplus - Improved Serviceability!

Changing seals in Steelwrist Qplus™ couplings is quick and easy without the need for proprietary and complicated tools.

Open Standard

We believe in open standard interfaces, so the SQ-system is designed to be able to connect to other brands using the same type of oil connection systems.



SQ Coupler							
Machine Weight (ton)	12-20	12-20	15-22	18-33	18-33	28-40	40-70
Model	SQ60-4	SQ60-5	SQ65	SQ70	SQ70/55	SQ80	SQ90
COUPLINGS	4	5	5	5	6	6	9
3/8"	-	2	-	-	-	-	1
1/2"	2	1	2	2	2	2	3
3/4"	2	2	3	1	2	2	1
1"	-	-	-	2	2	2	4
DIMENSIONS	SQ60-4	SQ60-5	SQ65	SQ70	SQ70/55	SQ80	SQ90
BUILDING HEIGHT (mm)	135	170	170	175	200	230	TBC
WIDTH (mm)	340	340	340	450	450	500	TBC
LENGTH (mm)	480	480	480	600	600	670	TBC
FRONT PIN LOCK	Yes	Yes	Yes	Yes	Yes	FPL2	TBC
BODY	Casted	Casted	Casted	Casted	Casted	Casted	Casted

